



— GLASS & MIRRORS

PROCESS & PROTECTIVE FILMS,
LAMINATORS, TECHNICAL TAPES





CONTENTS

Novacel Commitment to People and the Planet.....	4
Insulated Glazing Units.....	5
Coated Glass.....	8
Acid Etching Process.....	9
Mirrors & Lacquered Glass.....	10
Find your match.....	11

ABOUT NOVACEL

As a 40-year-old worldwide leader in surface solutions, Novacel proposes a comprehensive offer to its customers, ranging from industrial process films to technical tapes and paper products, machines and associated services.

Novacel continuously focuses on expertise and innovation to provide its customers and partners with the most appropriate recommendations to add value to their materials and to help enhance their industrial efficiency.

Novacel is present in **90 countries** with more than **750 employees** and several production sites worldwide. In line with its 'Beyond the Surface' ethos, Novacel is deeply committed to sustainability and innovation for People and the Planet.

NOVACEL, AN EXPERT FOR YOUR GLASS SURFACES

Glass is increasingly considered as highly stylish for its transparency and for its capacity to create unique lighting and optical effects. Glass also brings environmental benefits with its high durability. Due to continuous improvements made by research laboratories, savings and comfort brought by glass keeps increasing: thermal and acoustic insulation, safety, etc. Glass is the versatile material par excellence, it can be found all around us every day: in buildings (glazing, facades, railings, doors, partitions...), furniture (tables, shelves...), electronics and household appliances.

Due to its increasing value and technical capabilities glass needs to be preserved all along its transformations. With this objective in mind, Novacel has been working closely with its customers and partners to analyze their needs from the beginning of the glass fabrication up to its installation, in order to reach the best solution for them. **As such, Novacel has developed in-depth knowledge of the unique characteristics of glass worldwide. The value of our technical support is recognized by our customers.**

A DEDICATED RECOMMANDATION TEAM

The materials market is vast and diverse: metals, plastics, glass, decorative laminates, each with unique surfaces and manufacturing processes.

At Novacel, we have mastered these materials and put our expertise at your service to find the best surface solutions that meet your quality, productivity, and durability requirements.

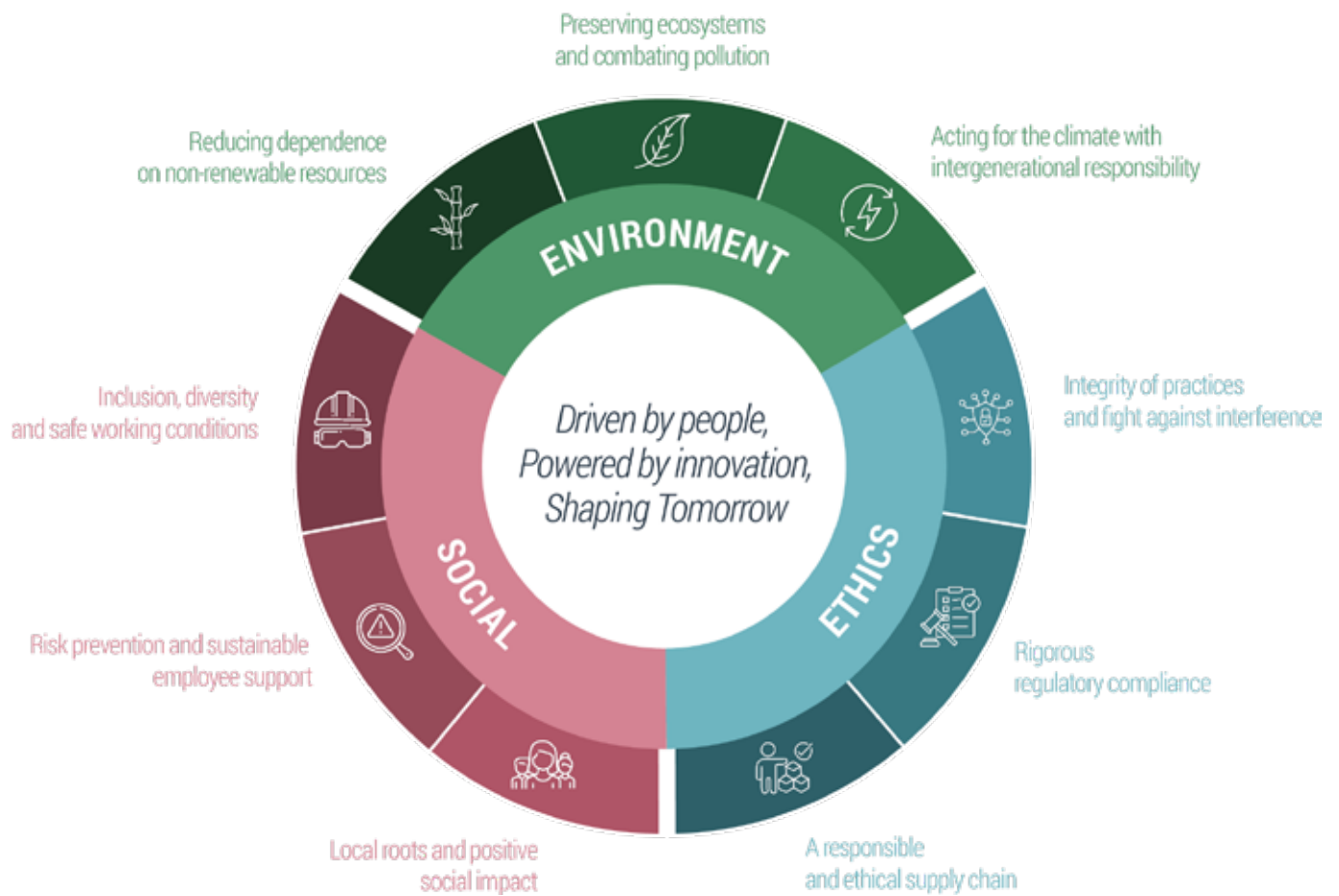
Our recommendation team is dedicated to advising you on the most suitable and customised process and protective films. This service, offered at no extra cost, is supported by a cutting-edge R&D laboratory equipped for detailed surface analysis and product testing.

By continually monitoring market trends and collaborating closely with our customers and partners, we strive for optimal results: minimal waste, high productivity, and a flawless end product.



— NOVACEL'S CSR STRATEGY

Aware of the current environmental, social, and ethics challenges, Novacel is committed to an ambitious and responsible CSR approach. This strategy is embodied through nine concrete commitments that guide our daily actions and strengthen our contribution to sustainable development, respecting all our stakeholders.



— INSULATED GLAZING UNITS (IGUs)

Produced by long and complex industrial processes, window glass, known as Insulated Glazed Units (IGUs), are highly valued. In addition to their architectural advantages, IGUs also offer other features: high-quality light, solar protection, heat and noise insulation, and even safety are provided by recent glazing innovations. As such, IGUs are now even more valuable and customers need to ensure that their characteristics are preserved from damage during every stage of the window manufacturing process.

NOVACEL FILMS

Novacel offers a broad range of process and protective films for use in conjunction with your IGU surfaces, from fabrication to reception at the construction site.



NOVACEL ASSETS

- > Worldwide outdoor resistance with **12 months** applicable from Arizona to Australia.
- > **Shield against** all types of damage on construction sites: cement, paint, silicone, grinding sparks and more.
- > Combine Novacel machines and films to allow **perfect lamination and to ensure film efficiency over time.**

Dedicated eco-responsible range OXYGEN for IGU surfaces: **3110**

- > 25% recycled content
- > -11% CO2 emission
- > Recyclable
- > Compatible with VX2 laminator
- > Same performances as standard products: mechanical, adhesive, UV resistance



Grade	Thickness (µm/mils)	Color	Outdoor resistance	Features
9343	49 / 2	Clear transparent	12 months	Compatible with VX2 new generation
4565	49 / 2	Blue	12 months	Compatible with VX2 new generation
9561	70 / 2.8	Clear transparent	12 months	Compatible with VX2 + VX2 new generation
3110	70 / 2.8	Clear transparent	12 months	Compatible with VX2 + VX2 new generation - Eco-responsible solution

NOVACEL MACHINE LAMINATORS

Novacel offers the widest range of lamination machines dedicated to the horizontal or vertical application of adhesive films. WALCO[®], the Novacel machine brand, designs the **most innovative, reliable, robust and safe laminating machines for the glass industry.**

NOVACEL ASSETS

High performance equipment which allows an easy and fast lamination of adhesive films without wrinkles or bubbles in any size and on any flat surface.

- > VX2 is the **unique vertical laminator custom-designed** and patented for the application of temporary adhesive film on Insulated Glass Units and flat glass latest **patented technologies**. It allows double-sided protection of your glazing unit in a single pass.
- > Also available :
 - > TX Precision
 - > Pro-jet

TX precision



Pro-Jet



Lamination	Machine	Standard Dimension	IGU Thickness	Film Application	Lamination Characteristics	Features
Vertical	VX2	Height: 200mm (7.9") up to 3,200mm (126") Length: 500mm (19.7") + conveyors length	4 mm (0.16") up to 80mm (3.2")	Single or Double-sided	Precise film application	- 30 sec film lamination cycle time - Automatic glass size calculation - Automatic cut
Horizontal	TX Precision	Widths: 1,400mm (55") 1,700mm (67")	4 mm (0.16") up to 80mm (3.2")	Single or Double-sided	Precise film application	- Automatic length detection - Automatic cut
Horizontal	Pro-Jet	Widths: 1,400 mm (55") up to 3,300 mm (132")	5 mm (0.2") up to 80mm (3.2")	Single or Double-sided	-	- Entry-level Laminator - Manual cut



NOVACEL TECHNICAL TAPES

Novacel offers dedicated masking tapes for the laminated glass industry. **They prevent the EVA or PVB interlayers from melting and over-flowing the edge of the laminated glass during the oven heating process.**

NOVACEL ASSETS

- > High temperature resistance
- > Does not flow at high temperature
- > Good conformability
- > Residue-free removability
- > Easy to apply

Grade	Thickness (µm/mils)	Color	Outdoor resistance	Features
BN53	80 / 3.2	Green	NA*	PET carrier with silicone adhesive High temperature resistance up to 180°C / 355°F
BN23	60 / 2.4	Green	NA*	PET carrier with silicone adhesive High temperature resistance up to 130°C / 265°F

NA*: Not Applicable



— COATED GLASS

Low e-coated or Low emissivity glass is treated with an invisible coating to improve glass insulating properties. As a result, coated glass can significantly improve your window energy performance.

Low-e glass enables better internal regulation and control of temperature, enabling a decrease in the use of air conditioning or central heating. It helps to **protect our environment**.

Low-e coatings are vulnerable to corrosion and need to be protected immediately after fabrication.



NOVACEL ASSETS

- > Compatible with the majority of coatings - consult with our experts
- > Preserve the chemical and optical properties of coated glass
- > A film applied with an adapted lamination machine will protect coated glass from downstream processes such as edge deletion, cutting, washing, etc.

Grade	Thickness (µm/mils)	Color	Outdoor resistance
4201	50 / 2	Clear transparent	none



— ACID ETCHING PROCESSES

Acid-etched glass allows light to penetrate while preserving room privacy. Acid-etching is a specific glass manufacturing process involving the application of hydrofluoric acid to leave the surface of the glass creating a **frosted appearance**. As this process involves various chemical compounds, it requires a **high-quality processing film**.

NOVACEL ASSETS

- > Prevent any damage like acid fumes and splashing
- > Even after acid contact, the film can be removed in one piece without glue residue



Dedicated eco-responsible range OXYGEN for Acid Etching surfaces:

3120

- > 25% recycled content
- > -11% CO2 emissions
- > Recyclable



Grade	Thickness (µm/mils)	Color	Outdoor resistance	Features
4178	25 / 1	Clear transparent	none	Withstands acid contact without residue
3120	28 / 1,1	Clear transparent	none	Withstands acid contact without residue Eco-responsible solution

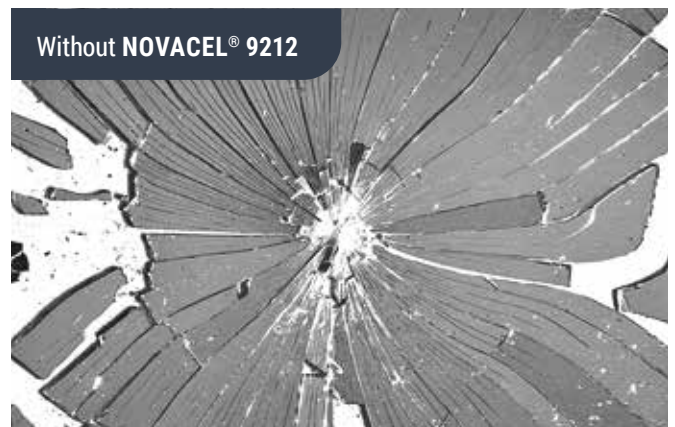
MIRRORS & LACQUERED GLASS

The functionality of mirrors and lacquered glass has never been greater. They expand space, reflect light, and are used as splashbacks and interior decoration for a modern aesthetic.

Permanent films offer **premium solutions** to preserve your valuable mirror and lacquered glass from any backing damage and guarantee end users' safety from beginning to end of fabrication. **Permanent film** is designed to be applied to the back of a mirror as a **safety measure**. In case of impact or accidental damage, the film will hold the shattered pieces of the mirror or lacquered glass together.

NOVACEL ASSETS

- > Guarantee operator and end user safety
- > Protection against scratches and corrosion
- > Better resistance to warm and humid conditions
- > Adapted products for challenging environment :
 - > 9212 complies with EN12600 requirements (level 2B2)
 - > 8028 Cat I for USA
- > Large widths: 9212 covers up to 2 550 mm (100 in) and 1830mm (72 in) for 8028
- > Easy lamination
- > No liner



Grade	Thickness (µm/mils)	Color	Outdoor resistance	Features
9212	70 / 2.8	Clear transparent	NA*	Permanant PET // EN12600 2B2
8028	145 / 5.7	White	NA*	Permanant PE // USA - Cat I

NA*: Not Applicable



FIND YOUR MATCH

Application	Grade	Product Type	Thickness (µm/mils)	Color	Outdoor Resistance	Features
IGU	9343	Film	49 / 2	Clear transparent	12 months	Compatible with VX2 new generation
IGU	4565	Film	49 / 2	Blue	12 months	Compatible with VX2 new generation
IGU	9561	Film	70 / 2.8	Clear transparent	12 months	Compatible with VX2 + VX2 new generation
IGU	3110	Film	70 / 2.8	Clear transparent	12 months	Compatible with VX2 + VX2 new generation - Eco-responsible solution
Mirror safety back	9212	Film	70 / 2.8	Clear transparent	NA*	Permanent PET EN12600 2B2
Mirror safety back	8028	Film	145 / 5.7	White	NA*	Permanent PE USA - Cat I
Coated glass	4201	Film	50 / 2	Clear transparent	none	-
Acid etching	4178	Film	25 / 1	Clear transparent	none	-
Acid etching	3120	Film	28 / 1,1	Clear transparent	none	Eco-responsible solution
IGU	BN53	Masking Tape	80 / 3.2	Green	NA*	PET carrier with silicone adhesive High temperature resistance up to 180°C / 355°F
IGU	BN23	Masking Tape	60 / 2.4	Green	NA*	PET carrier with silicone adhesive Tape, high temperature resistance up to 130°C / 265°F

Lamination	Machine	Standard Dimension	IGU Thickness	Film Application	Lamination Characteristics	Features
Vertical	VX2	Height: 200mm (7.9") up to 3.200 (126") Length: 500mm (19.7") + conveyors length	4mm (0.16") up to 80mm (3.2")	Single or Double-sided	Precise film application	- 30 sec. film lamination cycle time - Automatic glass size calculation - Automatic cut
Horizontal	TX precision	Width: 1.400mm (55") 1.700mm (67")	4mm (0.16") up to 80mm (3.2")	Single or Double-sided	Precise film application	- Automatic length detection - Automatic cut
Horizontal	Pro-Jet	Width: 1.400mm (55") up to 3.300mm (132")	5mm (0.2") up to 80mm (3.2")	Single or Double-sided	-	- Entry level Laminator - Manual cut

NA*: Not Applicable

For more grades or information, please refer to your sales representative.



www.novacel-solutions.com

