



OXYGEN

INNOVATIVE AND ECO-RESPONSIBLE FILMS

ABOUT NOVACEL

As a 40-year-old worldwide leader in surface solutions, Novacel proposes a full offer to its customers, ranging from industrial processing films, to technical tapes, paper products, machines and associated services. Novacel continuously focuses on expertise and innovation to provide its customers and partners with the most appropriate recommendations to value their materials and to contribute to their industrial efficiency.

Part of Chargeurs Group, Novacel is present in **90 countries** with more than **750 employees** and several production sites worldwide. With its ethos 'Beyond the Surface', Novacel is deeply committed to sustainability and innovation, for People and the Planet.

This brochure has been specifically written to further guide you on your path towards a carbonless and well-being world. The use of surface film optimizes your carbon footprint by avoiding waste and preserving your valuable surfaces. In order to reduce your carbon impact, you can either reduce the film thickness, its amount of raw material or replace the fossil content by a more sustainable material, i.e. recycled or vegetal based raw material. This saves non-renewable resources and reduces carbon emissions, which are responsible for global warming. This is the basis for the OXYGEN range, Novacel's new and unique range of eco-responsible products.



WHY USE NOVACEL SOLUTIONS?

> A Global Solution Provider

Novacel offers complete solutions with industrial processing films, technical tapes, paper products, machines and associated services.

> Unique features for your specific needs

We create innovative solutions to improve your industrial efficiency and take care of people like low noise, easy peel or films dedicated to new surfaces or equipments.

> Expertise & Technical support

Our teams are dedicated to provide you the best experience and to assist you from the initial search for the right solution right up to its final implementation.

> A Strong CSR Commitment

Novacel keeps working on its carbon footprint by improving its production, creating eco-responsible solutions and placing human well-being at the heart of its strategy.

NOVACEL COMMITMENT TO PEOPLE AND THE PLANET

Novacel CSR Strategy is organized around 3 pillars:

- Creating a responsible industrial community
- Minimizing our environmental impact
- Eco-designing our products

Eco-designing our products

Reducing the environmental impact of our products by innovating all along their conception until their end of life and taking care of teams' and customers' health is at the heart of Novacel CSR Strategy.

Tackling the ecological impact of our products on the planet is a daily challenge. **Oxygen**, Novacel unique range of responsible products promises to:

- Reduce fossil raw materials use to save non-renewable resources
- Use as many recycled resources as possible to limit the production of new fossil based films
- Minimize CO₂ emissions
- Be 100% recyclable



— FOSSIL
RESSOURCES



— CO₂ EMISSION



+ RECYCLING

Increasing the human wellbeing at work is a daily preoccupation at Novacel; internally and externally. Novacel keeps developing technologies in this direction to decrease repetitive strain injury (RSI) or increase the quality of work environment:



EASY PEEL



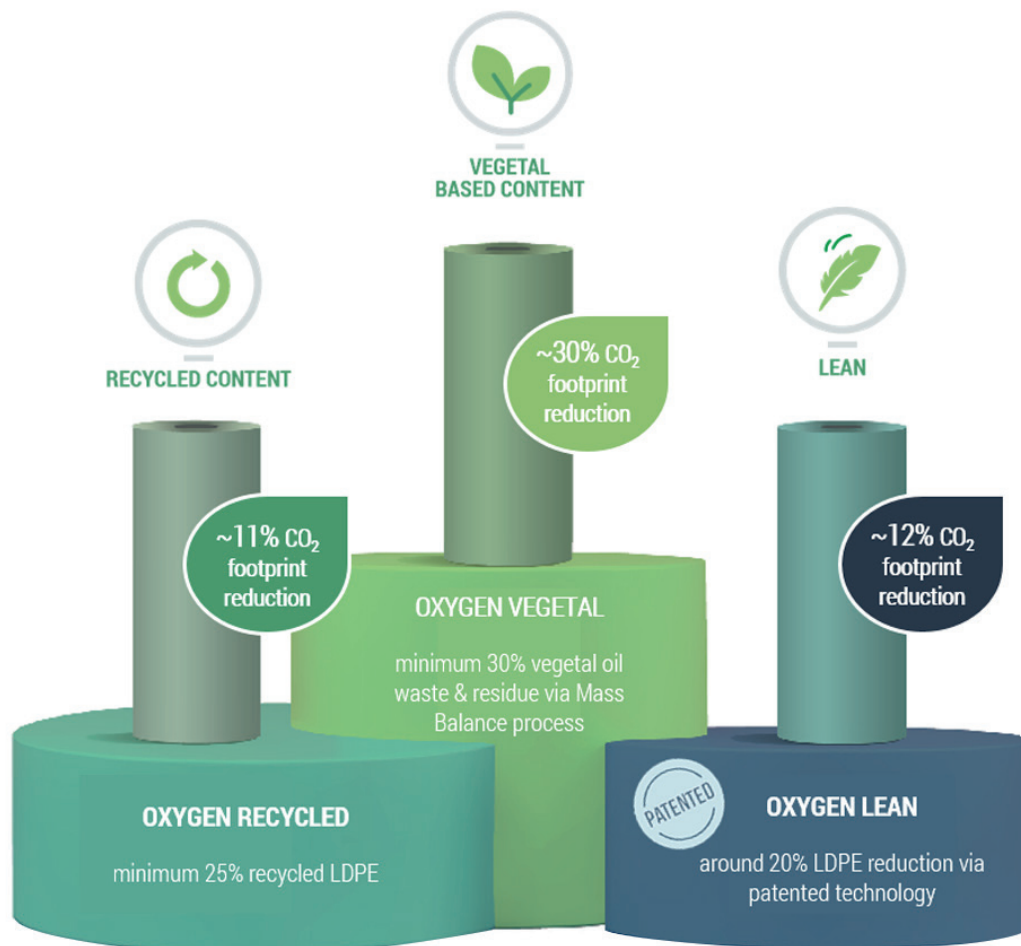
EASY UNWINDING



LOW NOISE

Ask now for a free sample roll for formal approval on your fabrication line!

— OXYGEN, 3 TECHNOLOGIES TO IMPROVE YOUR IMPACT ON THE PLANET



OXYGEN RECYCLED

The use of recycled content brings with it the additional advantage of reducing the film's carbon footprint.

Novacel selects the best quality of recycled LDPE pellets for your valuable surfaces.

The Recycled technology makes it possible to reuse plastic waste. As such, it contributes to the circular economy and reduces the use of new plastics. Novacel has chosen to use Post Consumer Recycling (PCR) LDPE.

- ~11% CO₂ footprint reduction compared to a standard film
- Rolls aspect have their own trademark aspect like recycled paper (grains/gels)

OXYGEN VEGETAL

For each square meter of Novacel OXYGEN Vegetal film, 30% of Low Density Polyethylene (LDPE) is bio-sourced and mixed into production through mass Balance approach.

By introducing bio-based polyethylene, the OXYGEN Vegetal range is the best solution for manufacturers wishing to reduce their CO₂ impact, while keeping the exact same characteristics as the standard one.

- ~30% CO₂ footprint reduction compared to a standard film
- Easy to switch
- Premium solution




OXYGEN LEAN

OXYGEN Lean films are the result of an innovative and patented extrusion process. Thanks to this unique operation, it is possible to reduce the quantity of LDPE included in the film by 20% while keeping the same thickness.

By choosing this patented Lean technology, you act both on the carbon footprint of the product but also on its transportation (reduced thanks to the lightening of the rolls).

- ~12% CO₂ footprint reduction compared to a standard film
- Lighter rolls : reduce transportation weight & improve health and safety workers condition

— **EVERY SURFACE HAS AN OXYGEN SOLUTION**

	 RECYCLED CONTENT	 LEAN	 VEGETAL BASED CONTENT
Stainless Steel		✓	✓
Pre-coated Metal	✓		✓
Aluminum		✓	✓
Plastics	✓*		✓
Laminates	✓		✓
PVC Window Profiles	✓		✓
Glass	✓		✓
Carpet	✓		

* not suitable for sensitive surfaces (glossy...) or thermoforming

As the applications of NOVACEL films are very extensive and the conditions of use may vary from one company to another, NOVACEL recommends that you systematically and prior to the use of the product carry out qualification tests on an industrial line, and communicate the conclusions to Novacel.

Oxygen range is being developed. You can find all the products availability on our website : <https://www.novacel-solutions.com/en/products/oxygen>





— YOU ARE WONDERING

Did you know?

The films significantly reduce the level of wastage and facilitates the production process, for you and your customers. Your surfaces are protected from processing to installation. Novacel solutions bring peace of mind and safety for your teams.

How is the CO₂ footprint calculated?

Life Cycle Inventories (LCI), based on the NF EN15 804 standard and Calculated by a third party, are used to assess Novacel films' Carbon footprint from cradle to gate.

Novacel's LCI are available on INIES environmental & health statement website (available only in French). If you want to know more about your Carbon activity, please contact your sales representative or fill our contact form on our website.

What is the mass balance approach?

Mass balance approach is an universal principal. The approach is to replace a percentage of raw materials by more responsible raw materials in the production at the early beginning of the manufacturing process. Thank to this approach you have the same final product with a lower CO₂ footprint.

What are the different types of recycled sourcing?

> **Post-Industrial Recycled Material (PIR)**: Post-industrial material in use, i.e. material that is at least partly made from post-industrial recyclable materials.

> **Post-Consumer Recycled Material (PCR)**: Post-consumer material in use: Material from end users that can no longer be used for its intended purpose, consisting of materials from «the yellow bag», waste paper, foil packaging, etc. from households. End consumers are (private) households and commercial and industrial facilities.

> **Re-Use / Regrinding Material**: Material made by/with reuse of waste from own production.

RESPONSIBILITY

Part of the United Nations Global Pact since 2017 by Chargeurs Group

Chargeurs Group has been a member of the United Nations Global Compact since 2017 and we ensure that our CSR approach is fully aligned with the United Nations Sustainable Development Goals (SDGs). The Global Compact translates 17 sustainability goals into 10 principles for companies to follow in the areas of human rights, international labor standards, environment and combating corruption.



Certified by ISCC (International Sustainability & Carbon Certification)

ISCC is a globally applicable sustainability certification system and covers all sustainable feedstocks, including agricultural and forestry biomass, circular and bio-based materials and renewables. Novacel and its suppliers had been certified by ISCC for their Mass balance approach.



REACH (Registration, Evaluation, Authorisation, and Restriction of Chemicals)

REACH Certification is a directive that is introduced in the European Union. This legislation is considered as one of the most complex regulations. The main aim of this regulation is to assess the manufacture and import of chemical materials within the European Union. Apart from this, this regulation focuses on improving the health of living beings and reducing the dangerous effects of chemicals on the environment.



Member of the Alliance to End Plastic Waste

Novacel partners with key organizations to promote recycling. As a member of the Alliance to End Plastic Waste (AEPW) we are actively working on the eco-design, traceability and recycling of products, alongside global peers in Europe, United States and China.

As an example, Novacel is a participant in the Holigrail 2.0 project, aiming to optimize the smart digital sorting of goods for high-quality recycling. This is an initiative of the European brand association AIM. It is supported by over 130 companies and organizations.



Environment & Safety Management System: compliant with ISO standards 14001 and 45001

Our mission is to protect your materials, while ensuring the health and safety of our employees and take care about the Planet. For several years now, we have been taking measures to this aim on our industrial sites.





www.novacel-solutions.com

